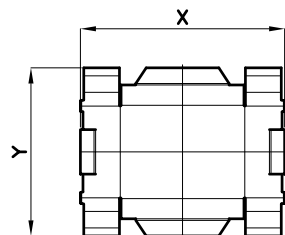
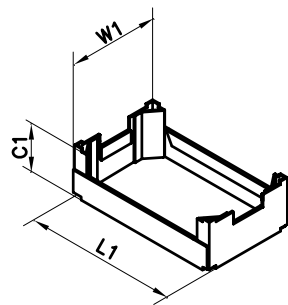


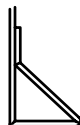
# TF40

## CONFIGURAZIONE MACCHINA PER "ANGOLO INTERNO ED ESTERNO". TRAY ERECTOR EQUIPPED FOR "INTERNAL AND EXTERNAL CORNER".

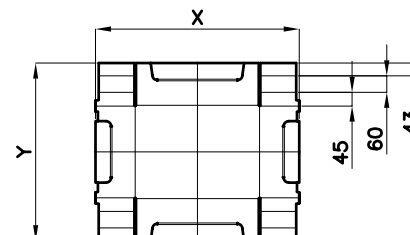
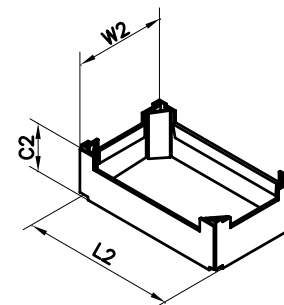
VASSOIO FLAPLESS STANDARD  
CON ANGOLI ESTERNI,  
RADDOPPIO TESTATA E  
RADDOPPIO FIANCATA.  
STANDARD FLAPLESS TRAY WITH  
EXTERNAL CORNERS, DOUBLE  
FRONT WALLS AND DOUBLE SIDE  
WALLS.



ANGOLO ESTERNO  
EXTERNAL CORNER

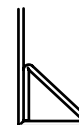


VASSOIO FLAPLESS STANDARD  
CON ANGOLI INTERNI,  
RADDOPPIO TESTATA E  
RADDOPPIO FIANCATA.  
STANDARD FLAPLESS TRAY WITH  
INTERNAL CORNERS, DOUBLE  
FRONT WALLS AND DOUBLE SIDE  
WALLS.



QUOTE PER ANGOLO  
INTERNO STANDARD  
DIMENSION FOR  
STANDARD INTERNAL  
CORNER

ANGOLO INTERNO  
INTERNAL CORNER



	Min.	Max.
X	420	1300
Y	340	1000
W1	200	600
W2	300	400
L1	300	600
L2	300	600
C1	60	250
C2	60	200

I LIMITI RIPORTATI SONO RIFERITI A CONFIGURAZIONI STANDARD. DIMENSIONI E FORME FUORI DA QUESTI LIMITI DEBONO ESSERE VERIFICATI E CONFERMATI DAL COSTRUTTORE.  
THE MENTIONED LIMITS REFER TO STANDARD CONFIGURATIONS. DIMENSION AND SHAPES OUT OF THESE LIMITS MUST BE VERIFIED AND CONFIRMED BY THE MANUFACTURER.

NOTE

**SACMI** PACKAGING  
IMOLA (BOLOGNA) S.p.A.

DATA:  
12/11/2008

CODICE